

## Diesel Engines - General technical data medium speed four stroke Diesel engines

Type	No. of cyl.	Rating MCR		Speed (r.p.m.)	Mean eff pressure (bar)	Length (mm)	Width (mm)	Height (mm)	Weight (t)
		(kw)	(HP)						
6L40/54A	6	2760	3750	450	18.1	6350	2070	3900	56
16V52/55A	16	12400	16880	450	17.7	10000	4000	5500	181

## Low speed two stroke Diesel engines

Type	No. of cyl.	Rating MCR		Speed (r.p.m.)	Mean eff pressure (bar)	Weight (t)
		(kw)	(HP)			
K6Sz52/105Cle	6	5310	7200	165	14.4	190

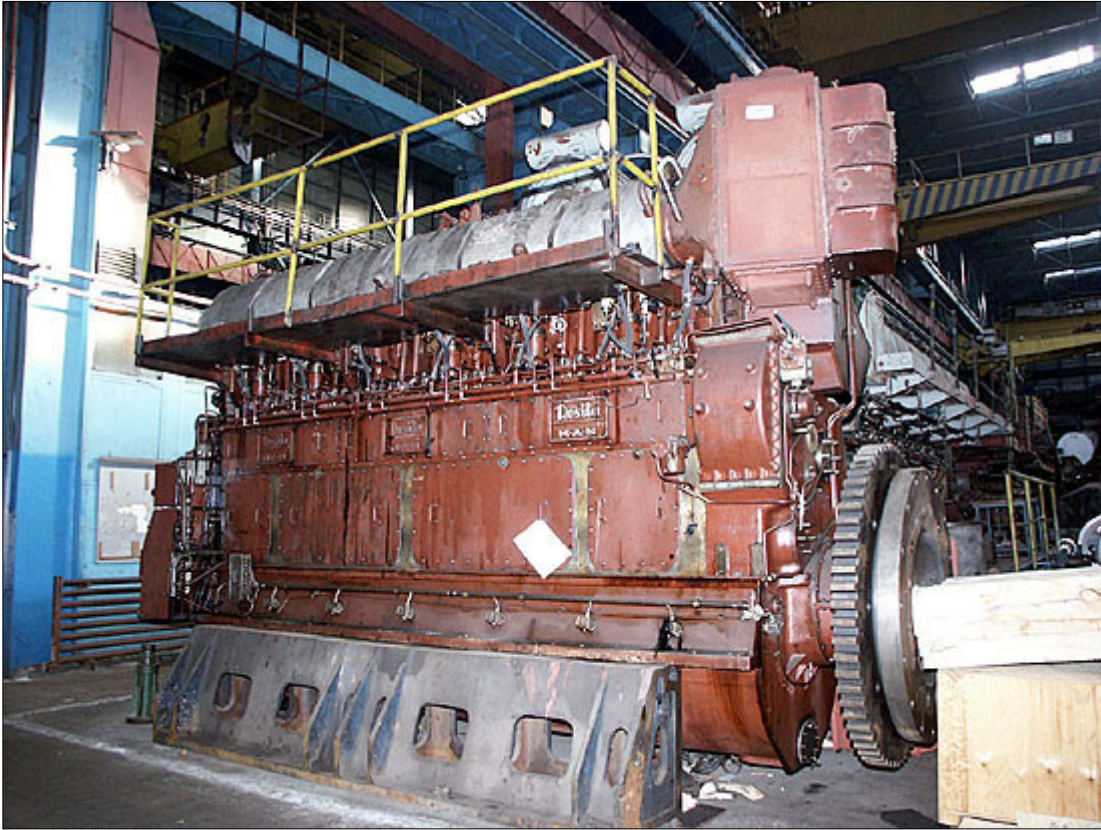
## Medium speed four stroke Diesel engines

Type of engine	Number of pieces
6L40/54A	1
16V52/55A	4

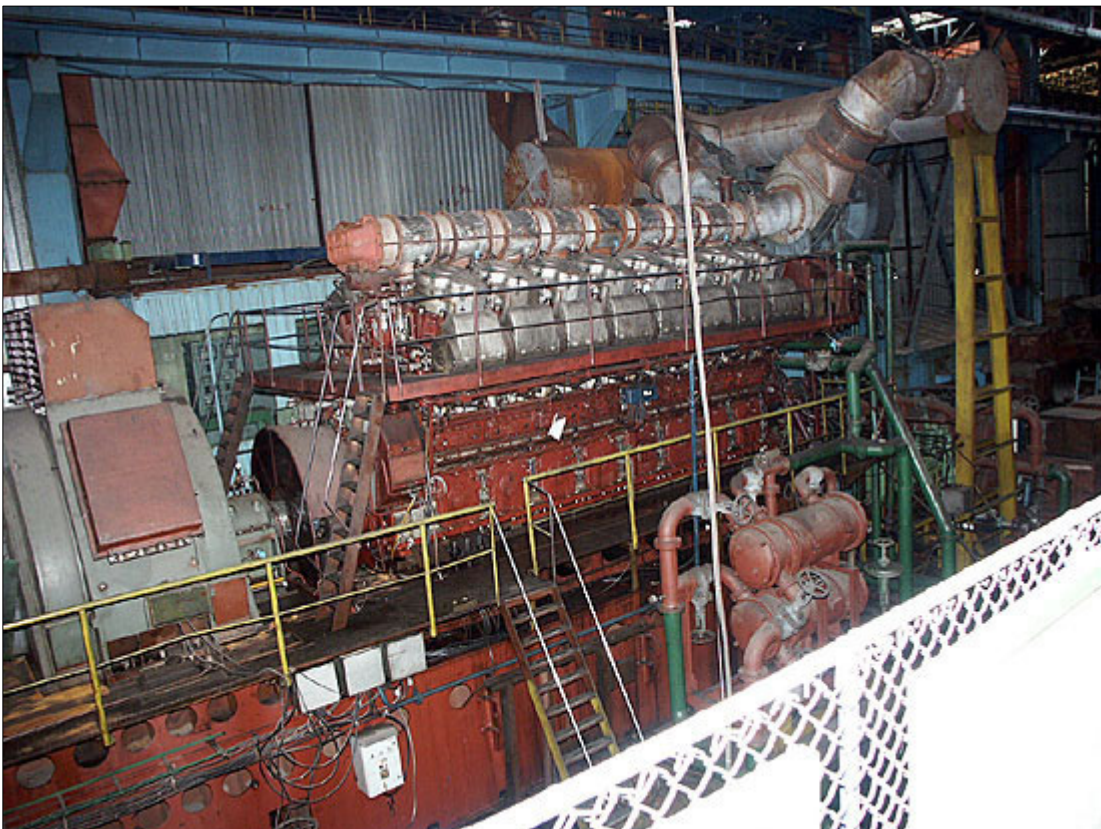
## Low speed two stroke Diesel engines

Type of engine	Number of pieces
K6Sz52/105Cle	2

**Pictures with the available engines:**



**6L40/54A**



**16V52/55A**

**Pictures with the available engines:**



**K6Sz52/105Cle**